



WELCOME TO TORPHINS

**IN AND AROUND THE VILLAGE
AND THINGS YOU NEED TO KNOW**

This Document is published by volunteers from Torphins Community Council and distributed for free. The aim of this document is to be as inclusive and comprehensive as possible. Please send any comments to the email address below.

www.torphins.net
admin@torphins.net

Cover by Leigh Watt

Other photographs by Ng Teow Choon unless otherwise stated

Publication History

Revision 001.02	24.03.20
Revision 001.33	12.05.20 (printed)
Revision 002.04	01.12.20 (printed)
Revision 003.03	18.12.25 (TBC)

Contents

1.0	Introduction.....	1
1.1	Welcome to Torphins	1
1.2	Local History	5
1.3	Key Data	9
2.0	Directory	10
2.1	Emergency.....	10
2.2	Services + Utilities	12
2.3	Elected Officials	13
2.4	Education + Pre-School Child Care.....	14
2.5	After School	15
2.6	Health Services.....	16
2.7	Care Homes.....	17
2.8	Perinatal.....	18
2.9	Eateries.....	19
2.10	Transportation.....	20
2.11	Halls and Venues	23
2.12	Volunteering.....	24
2.13	Churches	27
2.14	Banks	28
2.15	Supermarkets	29
2.16	Potholes, Street Lighting and Other Reporting.....	30
2.17	Recycling	31
2.18	Local Gyms and Health Centres.....	32
2.19	Entertainment	33
2.20	Activities and Outdoors.....	35
3.0	Local Groups and Clubs	37
4.0	Local Businesses.....	39
5.0	Notes	45

1.0 Introduction

1.1 Welcome to Torphins

Torphins is a small attractive village situated approximately 25 miles from Aberdeen, situated within the Marr area, Aberdeenshire. It has a population of approximately 1500 and is surrounded by beautiful countryside. For anyone looking to relocate to this area Torphins has much to offer people of all ages.

Full details are provided inside but let us give you a flavour of what Torphins can offer.

For families looking to make Torphins their home the village hosts a nursery, playgroup and Primary School. Secondary School children attend the Academy at Aboyne, some 9 miles from Torphins.

There is an excellent Medical Practice run by several doctors and various nursing and support staff offering a range of therapeutic services.

Torphins Park in the centre of the village provides a junior football pitch and a host of children's play equipment. Adjoining the park are Tennis Courts and a Bowling Green. Both have active clubs and are happy to welcome new members. If the weather is cold enough in the winter Torphins boasts a Curling Rink. There is also a Nine Hole Golf Course. Every year Torphins hosts a Gala on the third Saturday in August.

Mid Deeside Parish Church is located in Torphins serving the villages of Torphins, Kincardine O'Neil and Lumphanan. In the last few years the Church has had a major renovation and extension, with the new halls providing venues for local groups. It has become quite a hub for the village. Our Minister, The Rev. Holly Smith, has come over to settle in Scotland from America with her husband and family of four.

In the centre of the Village there is a well-stocked general store, Scotmid, which includes a Post Office and a Cash Machine; A Pharmacy and Gift Shop; Platform 22 coffee house

where a local farmers market is held every Wednesday and Lily's Dough provide pizzas on a Thursday evening; A Hairdresser & Beautician; The Bread of Life Charity Shop; The Learney Arms, providing Indian Cuisine; The Gatsby (A Luxury Occasion Venue) ; A Chinese Take Away; The Station Garage and Repair Shop; Vets Practice; Blacksmith. and a nine hole golf course. A Filling Station with a Residential Caravan Park and shop are situated at Campfield, approximately 1.5 miles east of the village. The Public Toilets are situated in the centre of the village, across from the school and next to the Learney Hall.

The village is supported by the Torphins Community Council run by a group of dedicated volunteers. The TCC works closely with Aberdeenshire Council in trying to improve various aspects of village life. It has its own dedicated web site and 'facebook' page keeping everyone up to date with what is going on in the village and the surrounding area. This contains a great deal of useful information.

Every December the TCC festoons the centre of the village with Festive Lights. A large Christmas Tree, donated by the Learney Estates, takes pride of place outside the Learney Hall where the annual Carol Service is held. The large Snowflake decoration on the Clock Tower is the pride of the village and envied by other villages around.

The TCC also provides the village with flower tubs which are managed by a group of volunteers both Summer and Winter.

There is a very active local Paths Group which is working towards providing 'Paths for All' throughout the village with the long term aim of linking both Banchory and Lumphanan by path.

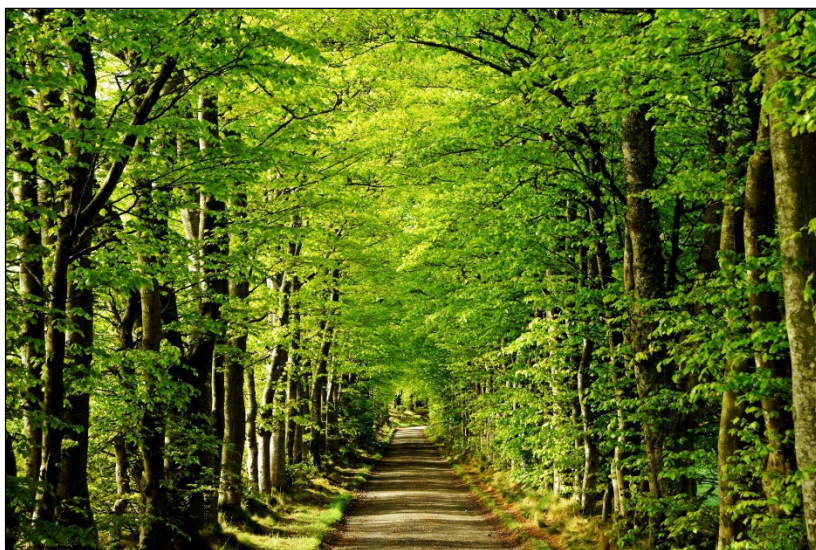
The village is linked to surrounding towns and villages, including Aberdeen, by a local bus service.

There is a variety of Groups run from both the Learney Hall and the Church Halls. These include: Pilates; Yoga; Mahjong; Bridge; Scouts etc, a full list of groups can be found later in the Welcome Pack. There are also a host of businesses working in and around the Torphins area.

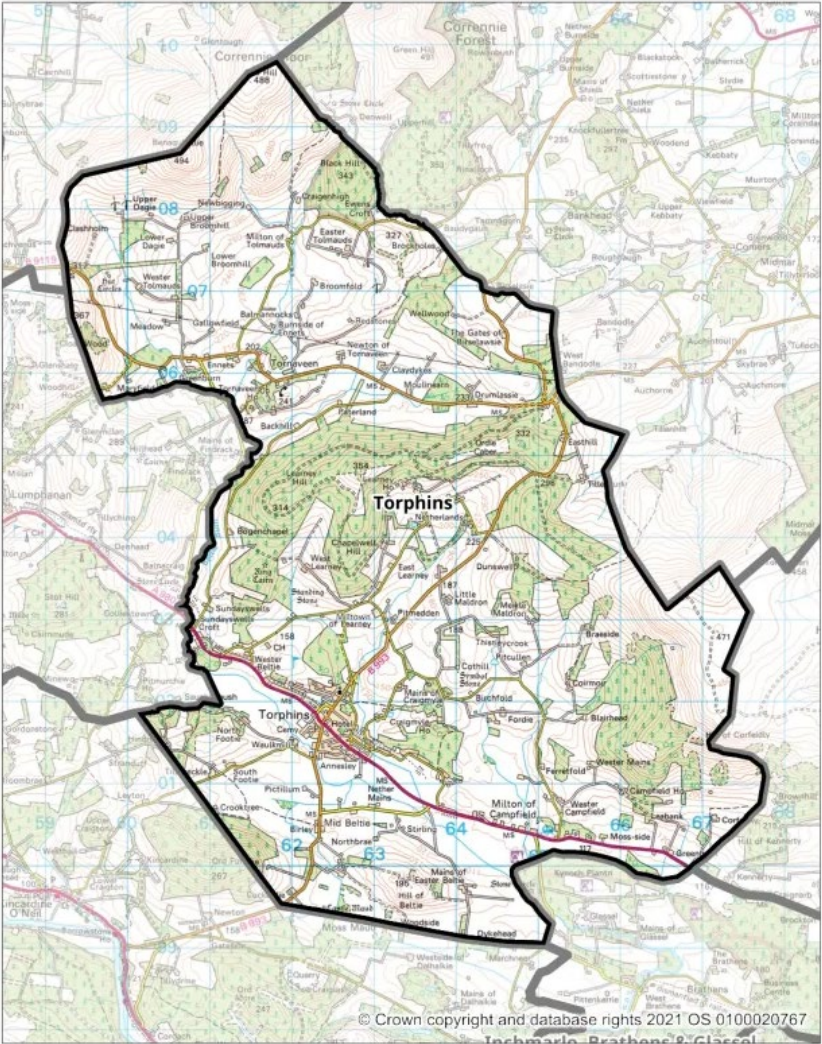
The Torphins Community Forum is a Facebook page providing a means of keeping in touch with what is going on in the area and exchanging ideas and views.

Torphins Community Forum
www.facebook.com/groups/1518971605069498/

Torphins Community Council
www.facebook.com/TorphinsCommunity/



Torphins Community Council Boundary



1.2 Local History

The area around Torphins has been populated for more than 4000 years. For centuries people here gained a living through primitive subsistence agriculture that changed little until after the Jacobite Rebellion of 1745. At that time there were massive changes in the landscape and the fortunes of local people. Fields were cleared of rocks and the drystone dykes we see around us were built; extensive boglands were drained and brought into production; new crops and scientific farming methods were introduced. This endeavour took the area from one of the poorest in the country to one of the wealthiest, producing meat and crops for the southern cities.

The community was built around small farms, of which “Turfins” or “Turfins Farm” was one of many. In 1812, the Potarch Bridge was constructed and with it an important north – south road sweeping up past Turfins Farm and on towards Alford and Huntly. Shortly after, William Innes of Raemoir built a road from Garlogie to Lumphanan. The junction of these two roads, close to Turfins Farm became the ideal location for a wayside inn (the older part of the Learney Arms), a farrier and other local services.

The Deeside Railway was built linking [Aberdeen](#) to [Ballater](#) in the 1850s. For most of its length, the railway ran within sight of the River Dee but, on the stretch west of [Banchory](#), the line first curved north through Torphins and Lumphanan before returning south to rejoin the Dee at [Aboyne](#). The Turfins Farm road junction was chosen as the site for a station giving access to Kincardine O'Neil, the main village of the parish.

Colonel Thomas Innes of Learney saw the opportunity to exploit the rail link by establishing a village that would support local agriculture and be attractive to the professional and business people in Aberdeen. He laid out the plans for the village of Torphins and sold feus to local entrepreneurs who built the village in an agreed style. The village grew rapidly, outstripping Lumphanan and Kincardine O'Neil to become the commercial hub of the area. In particular the Learney Arms Hotel was extended by Thomas Innes in 1874, to become a prestigious tourist destination. Torphins had arrived as a

holiday destination, a great place to live and a support hub for the surrounding agriculture! It had a nine hole golf course, bowling green and tennis courts. It was known for the attractive scenery and walking in the area. Even the Beltie Burn was reputed to have health - giving spa properties. By the start of the 20th century Torphins was a substantial village with all services available locally - general stores, bakers, butcher, tailor, watchmaker, bicycle shop as well as the mills, farriers and other services needed to support agriculture.

From earliest times the area around Torphins was an outlying part of the Parish of Kincardine O'Neil. A United Free Church was built in Craigmyle, east of the village in 1843, just after the Free Church split from the established church. It moved to a new building in the centre of the village in 1905. With the growth of Torphins, the need for its own established church became very apparent, and in 1876 a church was erected to the north of the village. In 1941 these two churches were amalgamated, and in 2015, the churches of Lumphanan, Kincardine O'Neil and Torphins were merged to form the Mid Deeside Church, based in the modernised Torphins Church building.

We owe the name "Torphins" to Colonel Thomas Innes as he promoted his new village. The origin of the older name "Turfins" is unclear. It has been suggested that it comes from the Gaelic "Torr Fionn" meaning "white hill". This seems improbable as there is no white hill to which the name might refer. It has also been suggested that it comes from Thorfinn Sigurdsson, Thorfinn the Mighty, Earl of Orkney, but there is little to support this. A more promising avenue is to look at the defining feature of the farm's location, namely that it was a on a hill surrounded by bogland on three sides. That leads us to "hill of the bogs" - "Tor Feithachan" (pronounced "tor fey-a-han") which could have degenerated to the pronunciation "Turfins".

Adapting to changing needs, the village of Torphins has from its foundation been home to people from many different walks of life, Over its 150 years of existence it has enriched the lives of all who have lived here.

By Brian Murray

Co-author with Denis Christie of 'A History of Torphins' available at www.oldtorphins.com along with lots more photos and information



Map of Torphins from 1866.

1.3 Key Data

The Torphins Community Council carried out a survey of the local community in 2019 receiving over 143 responses. It asked residents what they enjoyed about living in Torphins and what they would like to see change. This is part of an ongoing process which leads to the creation of a 'Local Place Plan' that is produced by the TCC with assistance from the wider community.

The word cloud opposite is a compilation of all the most common words in the survey responses, sized according to their frequency. The larger the word, the more often it was mentioned in the feedback. The 2022 Census recorded:

Population

- 1,315 people living in Torphins in 559 occupied households
 - 1% decline vs +21% growth in Aberdeenshire

Age

- 19% under 17yo, 56% 18-64yo, 25% 65+yo
 - 21% average 65+ across Aberdeenshire

Employment

- 41% of people in employment work from home or travel less than 5km to work

Income

- Torphins had the third highest Average Household Income in 2024, according to Aberdeenshire Council
- 2022/23 average house price £321,000 vs Aberdeenshire's average £233,000

<https://www.scotlandscensus.gov.uk/search-the-census#/location/CSETT2022?title=Census%20Settlement%202022>
https://www.citypopulation.de/en/uk/scotland/aberdeenshire/S52000618_torphins/www.aberdeenshire.gov.uk/media/a2qlkux4/aberdeenshires-housing-market-2024.pdf

2.0 Directory

2.1 Emergency

AMBULANCE / POLICE / FIRE BRIGADE

Call **999** in an emergency

Call **101** to report a crime or other concerns that do not require an emergency response.

LOCAL DOCTORS

Torphins Medical Practice
013398 82221

Call **111** when your GP Practice or Dentist is closed and you need urgent advice

Dental Information and Advice Line (DIAL) 03454 565990

LOCAL PHARMACIST

Torphins Pharmacy
www.torphinspharmacy.com
013398 82071

HOME SECURITY

Information on Home Security, Scams, Fire Safety, Cold Callers etc.
www.buildingsafercommunities.scot

Scottish Fire & Rescue – to arrange free home safety visits 0800 0731 999

ALISS

Community Health & Well Being Information System for people in Scotland to help them find support and help when they need it most. The Scottish Government believe that people living with long term conditions, disabled people and unpaid carers should be able to access information they need to help them live well.

www.aliss.org

BREATHING SPACE

For those feeling low or depressed

www.breathingspace.scot
0800 838587

SAMARITANS

01224 574488 24 hours 365 days a year Free Call 116 123
What ever you are going through, a Samaritan will face it with you.
www.samaritans.org/branches/aberdeen

NETWORKS OF WELLBEING

Mental Health and Wellbeing Support 01466 793732
www.networksofwellbeing.org

SCOTTISH ASSOCIATION FOR MENTAL HEALTH

Mental Health Support 0200 1234 677
www.samh.org.uk

ONE-to-ONE COUNSELLING SERVICE DEESIDE

013398 886700 www.mha.uk.net

2.2 Services + Utilities

REFUSE COLLECTION

Each household has a Black Bin for general waste that can't be recycled; a Blue Bin for paper and cardboard; an orange bin for plastics and tins. They are collected on a three week cycle. There is also a food bin which is collected every week.

For more information consult www.myabereenshire.com
0345 608 1208

SCOTTISH WATER

Free Phone 24/7 - 0800 077 8778

LIVE LIFE ABERDEENSHIRE

Aberdeenshire Council's innovative approach to delivering Sports & Cultural Services on behalf of Aberdeenshire Council.

www.livelifeberdeenshire.org.uk

ROADS AND STREET LIGHTS

See also later section

www.aberdeenshire.gov.uk/roads

*** To report a fault i.e. potholes***

online.aberdeenshire.gov.uk/apps/roadconditions/

ELECTRICITY

Scottish Hydro

Emergency help line: 0800 300 999

GAS (LPG)

Torphins does not have Town Gas - LPG Gas is available

TELEPHONE

BT - Home Customers: 0800 800 150

To report a fault: 0800 800 154

BROADBAND

Fibre broadband is available to most houses in Torphins; however Virgin Media Broadband is not available at the time of writing.

2.3 Elected Officials

ABERDEENSHIRE COUNCIL

Councillor Anouk Kloppert

Scottish National Party, Aboyne, Upper Deeside & Donside
07388 956125

cllr.a.kloppert@aberdeenshire.gov.uk

Councillor Geva Blackett

Independent,, Aboyne, Upper Deeside & Donside
07876 475269

cllr.g.blackett@aberdeenshire.gov.uk

Councillor Sarah Brown

Conservative, Aboyne, Upper Deeside & Donside
07788 400842

cllr.s.brown@aberdeenshire.gov.uk

LOCAL MP AND MSP

Andrew Bowie MP

West Aberdeenshire and Kincardine
01330 705013

andrew.bowie.mp@parliament.uk

Alexander Burnett MSP

Aberdeenshire Ward
0131 348 5642

Alexander.Burnett.msp@parliament.scot

CITIZENS ADVICE ABERDEENSHIRE:

01224 747714 Westhill

www.swacab.org.uk

2.4 Education + Pre-School Child Care

TORPHINS PRIMARY & NURSERY SCHOOL

01339 267730

www.torphins.aberdeenshire.sch.uk

Head Teacher - David Birch

ABOYNE ACADEMY

01339 267750

www.aboyne.aca.aberdeenshire.gov.uk

Head Teacher – Michael Fay

BANCHORY ACADEMY

01330 700450

www.banchory.aca.aberdeenshire.gov.uk

Rector - Mrs. Judith Wight

TORPHINS BABY & TODDLER GROUP

Tuesdays 10.00 - 11.30 - Learney Hall

www.facebook.com/groups/TorphinsBabyToddlers

torphins.mctweb.co.uk

TORPHINS PRESCHOOL PLAYGROUP

Monday - Fridays 9.30-12 noon

Ha'berry, St Marnan Road,

Manager: Kay Sim

013398 82978

SUNSHINE NURSERY & AFTER SCHOOL CLUB

04 Beltie Road, 7am – 6pm Mon-Fri

013398 82929

www.sunshinenurseryandasc.co.uk

CHILD MINDERS

www.childcare.co.uk

NATALIE'S CHILDMINDING SERVICE

07735 378469

Nreid133@gmail.com

2.5 After School

EVERYTHING ELECTRONICS YOUTH CLUB

Mondays 6:30 – 8:00pm

info@futuregroup.org.uk

<https://www.futuregroup.org.uk/on-line-everything-electronic/>

SCOUTING

Thursday evenings @ Learney Hall Ages 6-14,

<https://www.scouts.org.uk/groups/10014379?loc=ab33%208nf&slug=1st-Torphins>

SOOYANG DO MARTIAL ARTS

Adult and kids classes

https://www.facebook.com/sooyangdoaboynetorphinstarlandhuntly/?!ocale=en_GB

BEFORE AND AFTER SCHOOL CHILDCARE

Sunshine Nursery

<https://sunshinenurseryandasc.co.uk/rooms/dragonflies/>



2.6 Health Services

MEDICAL PRACTICE & DOCTOR'S SURGERY

013398 82221

www.torphinsmedicalpractice.scot.nhs.uk

In addition to GP Consultations the practice provides the following:-

Essential Services

- . Asthma
- . COPD
- . Coronary Heart Disease
- . Diabetics
- . Hypertension

Additional Services

- . Cervical Smears
- . Contraceptive services – including Implanon insertion
- . Child health surveillance
- . Childhood immunisations
- . Cryosurgery – the freezing of warts and other small skin lesions
- .. Maternity services – midwife led
- . Minor surgery
- . Vaccinations and immunisations
- . Warfarin monitoring

Self Referral for Physiotherapy

0800 917 9390

LOCATION OF DEFIBRILLATORS

Scotmid - Village Centre

Mid Deeside Church

Doctors Surgery (Available during opening hours: 08:30 – 18:00)

Woodside Vets – Woodside Road

Torphins Golf Course

PHARMACY

013398 82071

www.torphinspharmacy.com

TORPHINS PATIENTS PARTICIPATION GROUP

013398 82221

Providing a voice for those using our local doctor's surgery and introduce new ideas etc. which will benefit all.

2.7 Care Homes

ANNESLEY HOUSE NURSING HOME

Torphins, Banchory AB31 4HL

www.annesleyhousecarehome.co.uk

013398 82297

INCHMARLO CARE HOME – BANCHORY

Info@inchmarlo-retirement.co.uk

01330 824981

BELLFIELD CARE HOME – BANCHORY (Church of Scotland)

01330 822692

BGG ALASTREAN CARE HOME – TARLAND

013398 81235

ALLACHBURN HOME – ABOYNE

01339 267762

PRAESMOHR HOUSE – ABOYNE

01339 886032

2.8 Perinatal

BANCHORY BREASTFEEDING GROUP

Facebook – Banchory Breastfeeding Buddies

www.facebook.com/groups/1434692986748791

Held at Deeside Rugby Club

Last Friday of the month. 2.30pm – 4.30 pm

ABOYNE BREASTFEEDING GROUP

aboynebreastfeedinggroup@gmail.com

Facebook – Aboyne Breastfeeding Group

www.facebook.com/groups/143433803093597

Community Room, Deeside Community Centre, Aboyne, AB34 5JN

Mondays 10 – 11.30am.

BUMP TO BABY WITH BELA

Pregnancy Yoga, Postnatal Yoga, Baby Yoga, Baby Massage and Labour and Birth preparation classes.

belabumtobaby@gmail.com

www.facebook.com/bumtobabywithbela

BONDING WITH BABY with Laura Henderson

'Come relax & have fun with your little one' 6 week Parent Education Courses in 'Infant Massage' and in 'Rhythm Kids' at the Mid Deeside Church

bondingwithbaby@yahoo.co.uk

www.facebook.com/bondingwithbaby

www.bondingwithbabyaberdeen.com



2.9 Eateries

PLATFORM 22

Coffee House and Pottery

www.facebook.com/Platform22

0133 988 2807

Wednesday 10 – 1700

Thursday 17 – 2000

Friday 10 – 1700

Saturday 10 - 1700

LILY'S DOUGH - PIZZA VAN

Every Thursday outside Platform 22 17 - 2000

WEEKLY FARMER'S MARKET

Every Wednesday 10 – 1400 outside Platform 22

RED ROSE CHINESE TAKEAWAY

Chinese and Asian Takeaway

0133 988 2518

LEARNEY ARMS

Indian Cuisine Restaurant, Bar, & Take Away

www.learneyindian.co.uk/

0133 988 2859

2.10 Transportation

BUS SERVICES

ABERDEENSHIRE COUNCIL FREE SHUTTLE BUS FROM TARLAND TO TORPHINS – 212 – Monday to Friday

Connects with the Stagecoach Service **202** from Torphins to Aberdeen – This is a ticketed bus service

STAGECOACH

From Torphins to Aberdeen via Banchory –

201 202 206 Aberdeen Banchory Torphins/Braemar

www.stagecoachbus.com/timetables

A2B DIAL-A-BUS

Aberdeenshire Council's dial-a-bus service. Passengers must book to travel on A2B journeys. The service is free and open to anyone in Lumphanan or Torphins who needs transport.

www.aberdeenshire.gov.uk/roads-and-travel/public-transport/a2b-dial-a-bus/deeside

To make a booking, call the A2B dial-a-bus hotline [01467 535 333](tel:01467535333) and select **option 1** between 9.30am and 3.30pm, Monday to Friday.

To cancel a journey, call the A2B dial-a-bus hotline [01467 535 333](tel:01467535333) and select **option 2** to leave a message, available 24 hours a day.

For further information, call the A2B dial-a-bus hotline [01467 535 333](tel:01467535333) and select **option 3** between 9am and 5pm, Monday to Friday.

You can email your enquiry to a2bdialabus@aberdeenshire.gov.uk.

TRAVEL LINE – NORTH EAST

0871 200 22 33 7.00 am – 10.00 pm 7 days a week

Information by phone about all public transport services

Bus; Train; Ferry

www.traveline.info

TRAINS

Aberdeen Railway Station, Guild Street, Aberdeen AB11 6LX

www.nationalrail.co.uk/stations/ABD 0800 912 2901

AIRPORT

Aberdeen International Airport,
Dyce, Aberdeen AB21 7DU
www.aberdeenairport.com
0344 481 6666

TAXIS

DAVRO TAXIS

Banchory
01330 825251

E & M LEES

01339 883623

BANCHORY TAXIS – TAXI & MINI BUS HIRE

01330 444 444

ABOYNE TAXI HIRE

07484 653357

FRASER'S TAXIS ABOYNE

07872 067693

HOME JAMES TAXIS

07380 802480

PETROL AND FUEL

I & P GRAY

The local fuel station is situated 2 miles outside the village on the way to Aberdeen, GLASSEL
0133 988 2184

ELECTRICAL CHARGING

POD POINT CHARGING STATION

Tesco's, Hill of Banchory

BELLFIELD CAR PARK, Banchory

GARAGES, SALES, SERVICE AND REPAIR

STATION GARAGE

Car Dealer – New and Second Hand Cars

Mechanical repairs, Motor Servicing and MOT Services are available in the village.

www.station-garage.co.uk

01339 882326

2.11 Halls and Venues

LEARNEY HALL – TORPHINS

www.livelifieberdeenshire.org.uk/community-halls/local-halls/learney-hall-torphins

01467 537753

Learney Hall in Torphins is a very beautiful small Hall, used by many community groups for meetings, coffee mornings, and clubs. It is also an excellent venue for ceilidhs, birthday parties, fundraisers and wedding receptions.

To hire: ecs.hires@aberdeenshire.gov.uk

MID DEESIDE CHURCH – TORPHINS

www.middeesidechurch.org.uk

Mid Deeside Church has various rooms available for rental along with all modern facilities.

TORPHINS PARK

To Hire:- Deeside Community Centre
Bridgview Road, Aboyne
01339 267702

LOCAL MUSICAL AND DRAMA

Tornaveen and Glassel Halls hold regular musical and drama events throughout the year. Both Halls can be hired for functions

TORNAVEEN HALL

Vhairi Walker 07888 822 426

Carey Fraser: carey@tornaveen.org.uk www.tornaveenhall.co.uk

GLASSEL HALL

www.facebook.com/pages/Glassel-Hall/226083840854869

Bryony Smith - bryony.smith@btinternet.com
07771 621577

PARK FACILITIES

A variety of play equipment, football pitch, tennis court, curling in winter, recycling centre

2.12 Volunteering

VOLUNTEERING OPPORTUNITIES

Those choosing to settle in Torphins may have many talents which would benefit the village and would be welcomed by any of these groups.

BREAD OF LIFE CHARITY SHOP

www.middeesidechurch.org.uk/charity-shop

6 Craigour Road, Torphins

07899 602952

Set up by Mid Deeside Parish Church and run by volunteers. It is open Wednesdays, Fridays and Saturdays . All profits are divided between the Church and local causes. It has been extremely successful and is a great place to help out at, providing an opportunity to do something worthwhile and meet lots of local people. Accepts donations Friday and Saturdays only.

TORPHINS COMMUNITY COUNCIL

www.torphins.net

TCC is a run by a committee of volunteers who bring a wealth of knowledge and a variety of expertise. Their remit is to represent the community and work with the local Aberdeenshire Councillors for the benefit of the catchment area they represent. Many issues are addressed including roads, traffic control, planning and the Local Development Plan. Every Christmas the TCC decorate the village with festive lights and a large Christmas Tree, donated by the Learney Estate, outside the Learney Hall where 'Carols round the Tree' are held, followed by mulled wine and mincemeat pies. The TCC are always interested in new members who are willing to share their skills and get involved.

TORPHINS 'ADOPT A TUB' SCHEME

013398 82307

Run by the TCC and managed by a group of volunteers who adopt one of the village tubs to look after summer and winter, providing the village with beautiful colours throughout the year.

TORPHINS EMERGENCY RESPONSE PLAN - (TORCH}

Robbie Dow dow,glassel@btinternet.com

Torphins Community Council has developed a plan to deliver emergency short-term support to the community if there is ever a need. It would be activated in circumstances where the Police and or Emergency Services were unable to attend immediately and where they considered action advisable. In such circumstances the plan would be delivered by volunteers from the community. The plan can be found on the TCC website. To join the team of volunteers or for more information contact the TCC via the Facebook page or contact a member of the Council for information.

TORPHINS PATHS GROUP

www.torphinspathsgroup.org

013398 82877

TPG was set up to provide Paths for All around the village making the paths, through the woods around our lovely village, accessible to people with mobility problems, those in wheel chairs and parents with buggies. A small group of very dedicated volunteers can be seen in all weathers almost every Tuesday from September to May digging out boulders, laying drains, barrowing hardcore, etc. New recruits are very welcome and it is a great way of keeping fit and meeting like-minded people. Their long-term goal is to eventually link Banchory and Lumphanan providing off road paths for both walkers and cyclists

TORPHINS GALA

torphinsgala@gmail.com

Torphins Gala was first held in 1946 and is now an annual event and the highlight in our summer calendar. It is a day of fun and spectacle, drawing the local community together to socialise, enjoy each other's company, build relationships, meet new people, and showcase local talent and businesses. There is also an element of fundraising to support future Galas and an opportunity for local charities to raise funds and promote what they do. The Gala is run by a committee of volunteers who are always looking for new members who will inject new ideas and experience into the mix. Members help according to their interests, strengths, and available time. It is a wonderful team to be part of. The Gala traditionally takes place on the 3rd Saturday in August but the team are active throughout the year and can be followed on Facebook 'Torphins Gala' or email us to find out more

ABERDEENSHIRE VOLUNTARY ACTION

www.avashire.org.uk

01330 825027

AVA Volunteering mission is to promote the growth of strong, resilient communities by connecting, supporting and promoting the Third Sector in Aberdeenshire. If your group, organisation or charity requires advice or support relating to anything from governance to funding or volunteering, please contact us.

KINCARDINE & DEESIDE BEFRIENDING

www.kdbefriending.org.uk

info@kdbefrienders.org.uk

01569765714

K&D Befriending is a local registered charity which aims to reduce social isolation and loneliness in older people throughout the Kincardine & Deeside area by matching them on a one to one basis with a volunteer befriender



2.13 Churches

MID DEESIDE CHURCH

The Reverend Holly Smith

www.middeesidechurch.org.uk

013398 89160

Mid Deeside Parish Church, representing the villages of Torphins, Lumphanan and Kincardine O'Neil, is an integral part of our village and provides many opportunities to get involved in the various groups the church runs for all ages, old and young. Everyone is welcome so please check out our web site or just come along and say hello.

ST. COLUMBA'S CATHOLIC CHURCH, BANCHORY

www.rcda.scot/parishes/aberdeenshire

01330 822835

TERNAN WEST PARISH CHURCH, BANCHORY

01330 822006

TERNAN EAST PARISH CHURCH, BANCHORY

01330 820380

BANCHORY CHRISTIAN FELLOWSHIP

01330 820791

ST. TERNAN'S SCOTTISH EPISCOPAL CHURCH, BANCHORY

01330 822783

ST.MARGARET'S CATHOLIC CHURCH, ABOYNE

As St Columba's above

ST. THOMAS' EPISCOPAL CHURCH, ABOYNE

stthomasaboyne@gmail.com

SCOTTISH EPISCOPAL CHURCH, KINCARDINE O'NEIL

Christ Church, 01339 822783

2.14 Banks

VIRGIN MONEY

60-62 Union Street, Aberdeen

26 West High Street, Inverurie

BANK OF SCOTLAND

70 High Street, Banchory, AB31 5SS

0345 721 3141

TSB

7,21a St. Nicholas Street, Aberdeen

32 West Hight Street, Inverurie 01467 448999

RBS

40 Albyn Place, Aberdeen

21 Market Place, Inverurie, AB51 3PU

0345 724 2424



2.15 Supermarkets

SCOTMID

THE SQUARE, TORPHINS

013398 82717

MORRISONS, BANCHORY

01330 820140

TESCO, BANCHORY

0345 0269618

CO-OP, ABOYNE

013398 87093

POST OFFICE

The Local Post Office is located in the Scotmid in The Square

0133 988 2717

2.16 Potholes, Street Lighting and Other Reporting

POTHoles

The best and quickest way to report is via the Council's website. It is then added to a list which is rated by priority:

online.aberdeenshire.gov.uk/apps/roadfaults

STREET LIGHTING

Emergency contact: 03456 08 12 05 to report a fault

Otherwise use the mapping tool to report:

online.aberdeenshire.gov.uk/apps/roadfaults

DOG FOULING

Specific incidents can be reported via the following form:

www.aberdeenshire.gov.uk/report/dog-fouling-report-form

OTHER ISSUES

A range of issue can be reported directly to Aberdeenshire Council:

www.aberdeenshire.gov.uk/report



2.17 Recycling

RECYCLING CENTRES

Glass & clothes, Torphins park

THE CROW'S NEST, BANCHORY

Upper Lochton Road, Banchory AB31 4EQ

www.aberdeenshire.gov.uk/waste/recycling/household-waste-recycling-centre-hwrc-opening-times/banchory-recycling-centre/

Monday to Thursday 9am to 4.30pm

Friday 9am to 4pm

Saturday and Sunday 9am to 4.30pm

The centre will be closed for staff lunch between 12.30 and 1 pm each day.

Items: Batteries (household and car), bikes, blue and orange bin recycling, bulky items |(alternatively you can request a **bulky item collection**; cooking oil, electrical appliances (anything with a plug or batteries), engine oil, fluorescent tubes (including energy-saving light bulbs; garden waste, gas cylinders, glass bottles and jars, plasterboard, polystyrene (large lengths broken up), rubble and ceramics, scrap metal, soil and turf, textiles, upholstered seating items, vapes, wood (including treated) and non-recyclable waste.

Items for reuse

The centre also accepts certain pre-loved items so that they can be rehomed by a local charity. These include:

Bikes, small electrical items with all parts and plug, footwear, furniture with a fire-retardant label, garden furniture and equipment, general household items (bric-a-brac), sports equipment.

2.18 Local Gyms and Health Centres

BANCHORY SPORTS VILLAGE

www.livelifeberdeenshire.org.uk/sport-and-physical-activity/venues/banchory-sports-village/

01330 700363

ABOYNE COMMUNITY CENTRE

www.livelifeberdeenshire.org.uk/sport-and-physical-activity/venues/aboyne-swimming-pool-and-deeside-community-centre/

01339 886222

THE UNIT BANCHORY

<http://theunit.fitness/>

01330 823056

Independently owned boutique gym

TONE UP FITNESS ALFORD

07527805500

Personal Trainer

ALFORD SKI CENTRE

www.livelifeberdeenshire.org.uk/sport-and-physical-activity/venues/alford-ski-centre/

01975 563024

2.19 Entertainment

CINEMA

Films shown various Fridays in the Community Centre Theatre in Aboyne. Book early to avoid disappointment.

www.showsataboyne.co.uk

Lumphanan Moving Pictures: www.lumphanan.com

Childrens films are shown the second Friday of each month apart from the Summer months

WOODEND BARN – Banchory

The Barn Arts provides an ambitious and inclusive cultural programme, with music, theatre, film, dance, comedy, visual art, workshops and exhibitions.

www.thebarnarts.co.uk

LIBRARIES

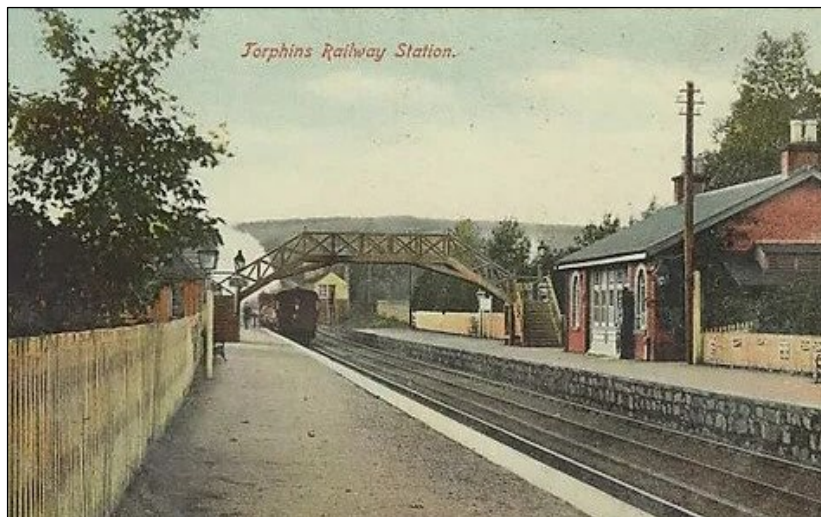
There are Libraries available in Banchory and Aboyne

Banchory: 01330 700441

Aboyne: 01339 267701

There are various activities and services available at the libraries Including drop in sessions, printing, childrens story time. Access to Printers etc.

A Book Doorstep Delivery service is also available if you cannot get to the library delivering your personal bundle of books to your doorstep monthly and free of charge.



2.20 Activities and Outdoors

WALKS AROUND TORPHINS

The Torphins Paths Group produce leaflets and maps with local village walks for all abilities. You can find these in Platform 22 or via their website: www.torphinspathsgroup.org
www.facebook.com/TorphinsPathsGroup

1st TORPHINS SCOUTS

www.deesidescouts.org at Learney Hall

Beavers	6 – 8 yrs	Thursday	5.30- 6.30
Cubs	8 - 10.5 yrs	Wednesday	7.00 - 8.30
Scouts	10 – 14 yrs	Thursday	7.00 - 9.00
Explorers	For older young people		

NOTES from TORPHINS

www.notesfromtorphins.com

Local community mixed voice choir meeting at Mid Deeside Church on Wednesday evenings 7.30 – 9.30

TORPHINS GOLF CLUB

www.torphinsgolfclub.co.uk

9 hole golf club 013398 82115

Also offers **FOOTGOLF** available for group booking (min12) players
For Birthday parties, Football Club celebrations etc.

Contact wilmanicol7@gmail.com

LIVE LIFE ABERDEENSHIRE

www.livelifeberdeenshire.org.uk

Aberdeenshire Council's portal for local attractions including sports, clubs and classes.

NATIONAL TRUST OF SCOTLAND

There are a number of historic sites close to Torphins, including Crathes Castle, Drum Castle, Craigievar Castle and Castle Fraser

www.nts.org.uk/visit/places

www.historicenvironment.scot/visit-a-place

DEESIDE ACTIVITY PARK

Activities include kart racing; quad biking; clay shooting; 4x4 off-road driving; rifle target shooting; archery; fly fishing; farm tours; digger manoeuvres and whisky tasting.

Dess, Aboyne, Aberdeenshire, AB34 5BD

www.deesideactivitypark.com - 01339 883536

LOUISE'S FARM KITCHEN AND SHOP

At Deeside Activity Park

www.louisesfarmkitchen.com

BATTLE GROUNDS PAINTBALL

Activities include paintball; laser tag; knife and axe throwing; airsoft; bubble football; archery and wilderness challenge

Druggam Woodlands, Banchory, AB31 5HN

www.battle-scotland.co.uk - 07773771741

WIDER WALKING

The Ordnance Survey online map is a good place to find walking routes in the wider area: osmaps.ordnancesurvey.co.uk

A few popular walks are:

Hill of Fare: www.walkhighlands.co.uk/aberdeenshire/hill-of-fare

Scolty Hill: www.walkhighlands.co.uk/aberdeenshire/scolty-hill

CYCLING

Torphins Typhoons

Regular rides for roadies, and mountain bikers at all level of abilities.

www.facebook.com/groups/TorphinsTyphoons

The local area has plenty of routes and clubs, some of which can be accessed here:

Routes: www.trailforks.com/region/aberdeenshire

Mountain Bike trails and jump park: www.facebook.com/tarlandtrails

Road cycling: www.deeside.org or

www.facebook.com/DeesideThistleCyclingClub

KNOCKBURN LOCH

Paddle Boarding; Wild water swimming; Sit-on-top kayaking; Kids activity camps.

www.knockburn.co.uk - 01330 822234

3.0 Local Groups and Clubs

BUMP TO BABY	Bela Spencer	belabumtobaby@gmail.com
BOWLING	Eric Buchan (President)	013398 82431
BRIDGE:	Martin Hunter (President)	013398 82853
CHOIR	Notes from Torphins - A Community Choir	www.notesfromtorphins.com
CYCLING	Torphins Typhoons Cycle Group	013398 89323
FOOTBALL	Torphins Junior Football Club	www.torphinsjfc.com
GOLF	Torphins 9 Hole Golf Club (Also FootGolf)	013398 2115 wilmanicol7@gmail.com
HORTICULTURAL SOCIETY	Now Banchory Gardening Club	www.banchorygardeningclub.com
KETTLEBELLS		www.facebook.com/kettlercisewithsimone
MAH JONG	Maureen Crowther	013398 82401
MARTIAL ARTS	Soo Yang Doo- May Hart	07866 897848 mayahartsyd@hotmail.com
MENS SHED	Midmar -	www.midmar.uk
	Aboyne	aboynemensshed.org www.facebook.com/aboynemensshed
	Banchory -	www.banchorymensshed.org
MID DEESIDE CHURCH Including the Villages of Torphins, Lumphanan, Kincardine O'Neil Groups	Coffee and Conversation	01339889160 www.middeesidechurch.org.uk
	Guild	
	Christmas Tree Festival	
	Music Box	
	Knit and Natter	
	Sunday Club	

MID DEESIDE CHURCH Various Groups	Youth Group	01339889160 www.middeesidechurch.org.uk
	Garden Gang	
PARENTS AND TODDLERS	Tuesdays Learney Hall 10 – 12 Term time.	kdwares@hotmail.com
PILATES - Sublime Pilates	sandy@sublimepilates.com	07545 341268
Physio Therapy & Pilates	Heather Scott info@physioandpilates.co.uk	07919 378232
RUGBY	Deeside Rugby Club - Banchory	01330 826506
SCOUTS	1st Deeside Scouts, Torphins	www.deesidescouts.org
SKIING	Alford Dry Slope	www.livelifearerdeenshire.org.uk/venues.alford-ski-centre
SWIMMING	Aboyne	www.enjoyaboyne.com/swimming-pool
	Banchory	www.banchorysportsvillage.co.uk
TENNIS		www.torphinstennisclub.wordpress.com
TORPHINS PATHS GROUP	See 'Volunteering' section	www.torphinspathsgroup.org 013398 82877
WALKING GROUPS	All welcome	Monday morning - 9.15 at entrance to park.
YOGA	Julie Webb - Mid Deeside Church	tuttifruttiyoga@hotmail.com
ZUMBA	Mid-Deeside Church Hall	013398 82722

4.0 Local Businesses

A	ACCOUNTANTS		
	BBKS & Co. Accountants, Banchory	www.bbks.co.uk	
	James Milne Chartered Accountants, Banchory		01330 828500
	Tax Assist Accountants and Bookkeepers, Banchory		0800 084 3278
	Grant Considine Chartered Accountants, Banchory		01330 823333

A	Architects		
	Moxon Architects	www.moxonarchitects.com	01339 742047

	BLACKSMITH		
	Ali Anderson - Fabteq Ltd	07917 657726	013398 82003
	BUILDERS & PROPERTY MAINTENANCE		
	G & E Duncan Builders		013398 82561
	George Anderson - Joiner & Builder		013398 82693
	Nick Edgar - Property Maintenance & Development		013398 82224
	BUS HIRE		
	E & M Lees - Coach & Mini Bus Hire		013398 83623

C	CHIMNEY SWEEP		
	K & I Paterson Ltd.	www.sootysweep.co.uk	
	Jack's Chimney Sweeps		07824156091
	CHIROPODISTS		
	Laura Maclean Podiatrist/Chiropodist	www.lmaclean.co.uk	01330 825517
	Banchory Health & Therapies Practice		01330 825333
	CLEANING		
	Golden Wipe Cleaning Services	info@goldenwipe.co.uk	07305 064490

D	DENTISTS		
	Fountain Dental Group – Banchory	www.fountaindentalgroup.co.uk	01330 822583
	Banchory Dental Practise		01330 823400
	Deeside Dental Care – Banchory	www.deesidedentalcare.com	01330 822788
	DOG BOARDING, WALKING & GROOMING		
	McWilliam Dog Walking Services & Puppy Workshop		013398 82429
	Kincraigie Dog Grooming	www.facebook.com/Kincraigie-Dog-Grooming	07752 812117
	Pet Treks Dog Walking and pet services	www.facebook.com/PetTreksBanchory	07774671778
	DOMESTIC APPLIANCE REPAIRS		
	Appliance Services – All White Goods jeff@appliance-servicing.co.uk		07756 127736
	DRIVING INSTRUCTORS		
	-		-

E	ELECTRICAL		
	Andy Ewan Electrical - Domestic and Commercial		07815 291922
	Graham Alexander	g.alexander155@btinternet.com	07849752839

Stuart Steel, electrician 07845 226109

F	FLORIST		
	Hay's Flowers - Wedding Florist		013398 89097
	FILLING STATION		
	I & P Gray, Campfield Filling Station, Shop & Caravan Park		013398 82184

G	GROCERS		
	Scotmid - General Grocers & Post Office		013398 82717
	GARAGE		
	Station Garage – Vehicle Sales, Repairs & MOTs		013398 82326

	HAIRDRESSER		
	Avenue 23 - Ladies & Gents Hairdresser & Beauty Salon		013398 89089
	HAULAGE		
	Robert Addison Road Haulage Services		013398 82248
	HOLIDAY HOMES / ACCOMODATION		
	AirBnB - The Space at the Creamery on Craigmyle		leoniegordon@gmail.com
	The Gatsby Luxury Holiday Home	www.thegatsbytorphins.co.uk	07710 366311
	HORSES		
	Pro-Equine Ltd (Animal Health)		013398 89330

I		
----------	--	--

J	JEWELLERS		
	Silver Story - Gorgeous, affordable, ethically sourced jewellery from around the world based in Torphins silver-story.co.uk		07715 449075
	JOINERS		
	Stuart Campbell - Joiner		07929 769695
	Built Joinery www.built-joinery.co.uk		07562 203361
	Ritchie Fowlie		07929 214897

K	KENNELS		
	Colliestown Farm Kennels		07825 883269
	Tillenturk Boarding Kennels		013398 82371

L	LIBRARY		
	BANCHORY LIBRARY		01330 700441
	ABOYNE LIBRARY		013398 267701
	LANDSCAPE GARDENERS		
	Christine Wallace cwallacelandscaping@gmail.com		07899 566819

M	MOTORHOME HIRE		
	Deeside Motor Homes - Hire		07765 003658

N	NURSERIES		
	Sunshine Nursery & After School Club		013398 82929
	Torphins School Nursery		01339 267730

O	OPTICIANS		
	Duncan & Todd	www.duncanandtoddgroup.com	01330 823306
	Hughes, Macdonald & Davidson	www.hmdopticians.co.uk	01330 822903

P	PAINTER & DECORATORS		
	A S Decorating - Torphins		07887 996939
	Gary Homer Painter & Decorator		07765 245878
	Andy Pirie Painter & Decorator		07841 872117
	PICTURE FRAMING		
	In the Frame		013398 82180
	PHARMACY		
	Torphins Pharmacy		013398 82071
	PHOTOGRAPHER		
	Vhairi Walker - Photographer	www.vhairiwalker.weebly.com	
	Simone Smith	www.simonesmithphotography.com	07920 798241
	PIANO TUNER		
	David Martin - Piano Tuning and Restoration		01569 764334
	PLASTERER		
	Alan Henderson		013398 82102
	PLUMBING & HEATING		
	Deeside Gas Service - Central Heating		013398 89111
	Roy Anderson – Plumbing & Heating		013398 82823
	Robert Fowler – Plumbing, Heating & Bathrooms		07701 009442
	Hyland Plumbing & Heating		01330 824812
	Bill Ewan - Plumber		07711 215892

R	REMOVALS	
	RESTAURANTS/ CAFES	
	Platform 22	013398 82807
	Learney Arms Indian Restaurant	013398 82859

S	SLATER	
	Gavin Dinnie - Slater	077860 37229
	SOLICITORS	
	Gray & Kellos, Ballater	013397 55535
	Raeburn Christie, Clark & Wallace, Banchory	01330 822931
	Stuart Willson, Dickson & Co., Alford	01975 562939

T	TAKE AWAY		
	New Easter Chinese Take-Away		013398 82518
	Learney Arms Indian		013398 82859
	TAXIS		
	Davro Taxis - Banchory		01330 825251
	D & M Taxis - Banchory		01330 820077
	Home James Taxis		07380 802480
	E & M Lees		013398 83623
	Hylander Taxi & Private Hire		07359 460665
	THERAPIST		
	Deeside Sports & Therapeutic Massage Sports		07766 748338
	Injury Specialist		01330 820999
	Massage & Reiki by Lucy		07966 002088
	Dr. Chris Fenn - Nutrition Consultant		013398 82487
	TIMBER		
	Midmar Timber Centre - Jim McLean	www.midmartimbercentre.co.uk	01330 833581
	TRAVEL AGENT		
	MacTravelling, Torphins		01330 464464
	TREE SURGEON		
	Graham	07909 758086	013398 82276

	MacAulay		
--	----------	--	--

U		
----------	--	--

V	VAN HIRE		
	Corybeg Services Man with Van	www.facebook.com/Corybeg-Services	07579824061
	VET		
	Woodside Veterinary Group, Large & Small Animal Veterinary Service		013398 82556

W		
	WEB DESIGN	
	MCT Web Designer and Developer - Fraser McTaggart	07949 600152

X		
Y		
Z		

Any local Businesses who wish to be included or removed from the information above please contact the Torphins Community Council
www.torphins.net



5.0 Notes
